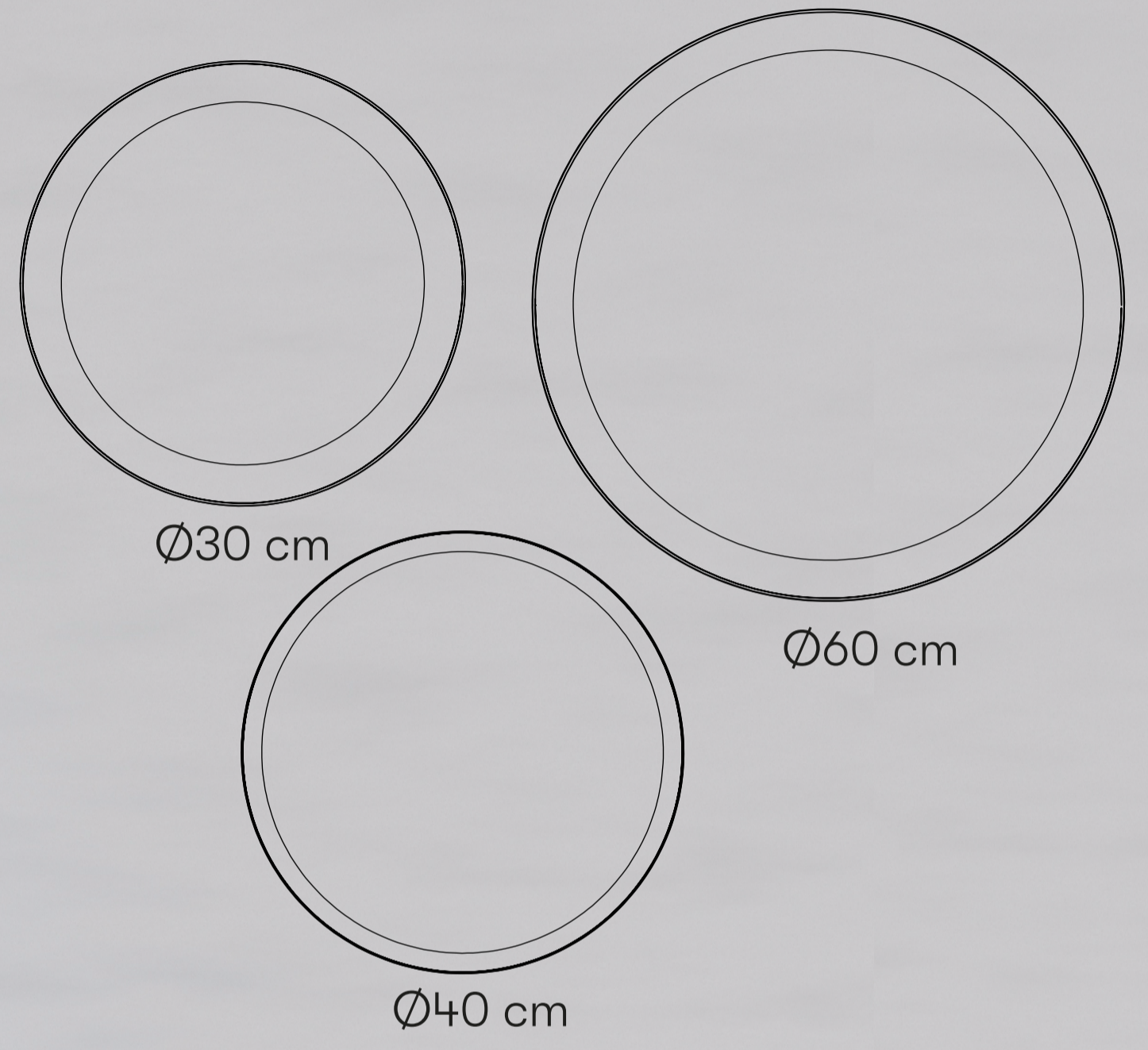




RINA DEEP SERIES

Available Dimensions



Ceiling

Wall

spacer surface

direct surface

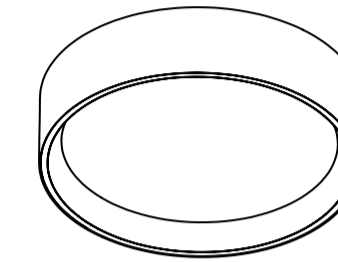
H75 mm

H100 mm

H75 mm



RINA DEEP



Ø300 mm

DIMENSIONS

Ø400 mm

Ø600 mm

PROFILE



POWER *

15 W 23 W 30 W *mt

LIGHT FLUX *

5100 lm *mt

COLOR TEMPERATURE

2700K 3000K 4000K

CRI

80 CRI/90 CRI

BEAMWIDTH



CONTROL TYPES

On/Off DALI Bluetooth

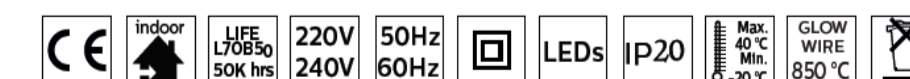
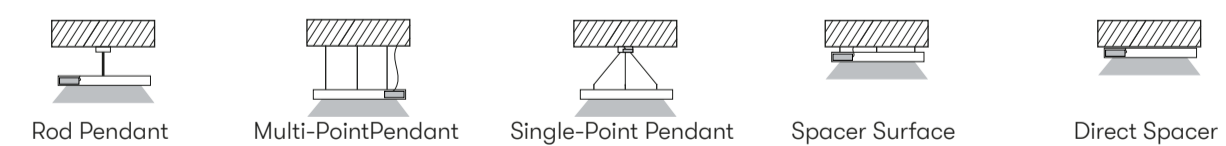
DIFFUSORS

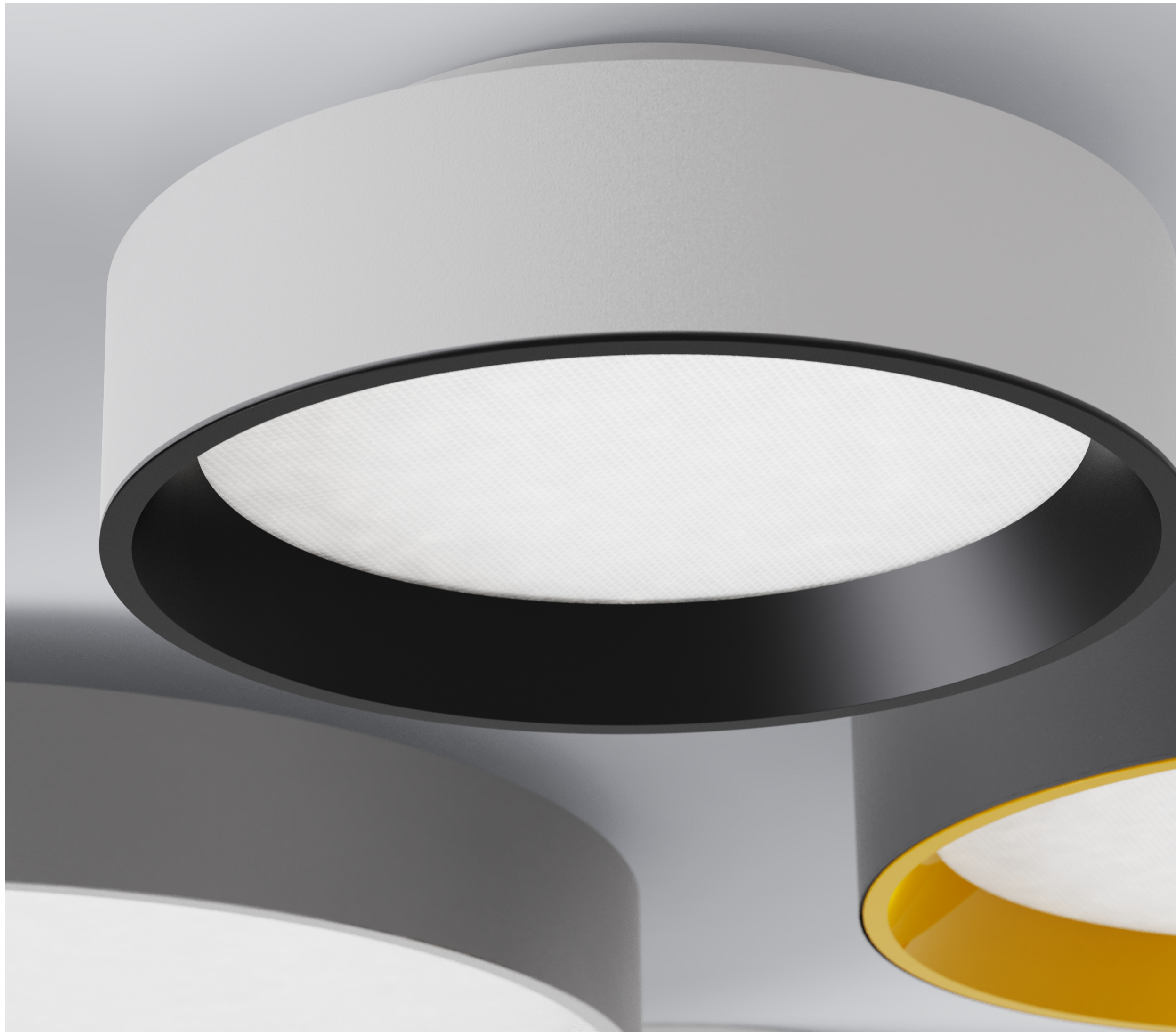
Opal Microprismatic

LIGHT SOURCE COLORS

Black Gray Anthracite
White Color by RAL Special Colors

MOUNTING TYPES





Special Colors Selection

SUPRANODIC



ICONIC



TIMELESS

